



Schoology Parent Information for Shanghai American School



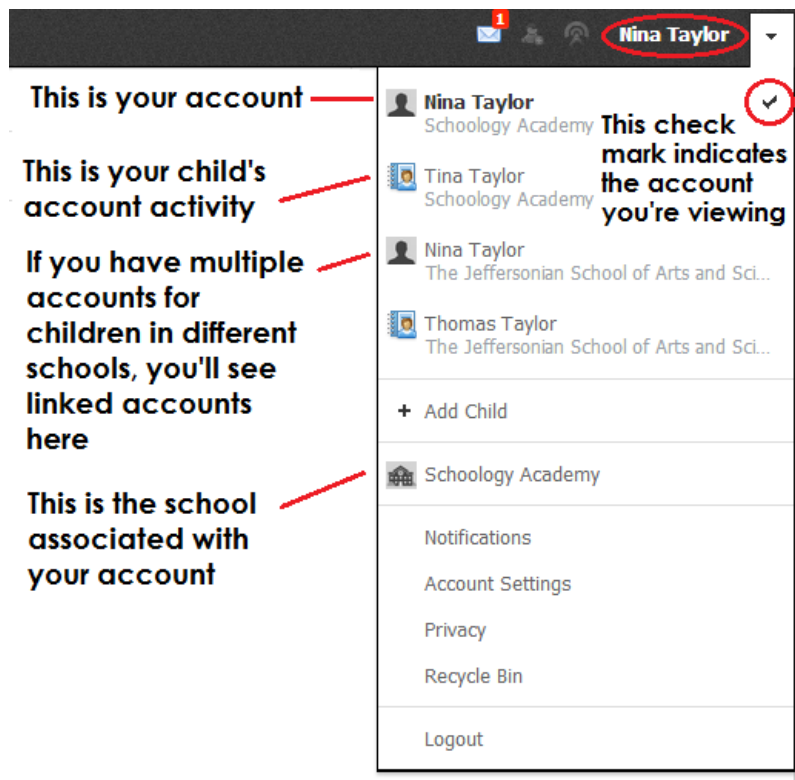
Username Login:

1. Go to app.schoology.com and log in with the Schoology username and password provided by the school.

When you log into Schoology, you'll land on your account's Home Page. This home page displays a Recent Activity feed of updates and Upcoming events at the school. This area only displays information pertinent to your account, and does not show any of your child's content.

To view a Summary of your child's activity in Schoology and upcoming items associated with their school, courses, and groups, you may toggle between your account and your child's account.

1. Click on the downfacing arrow on the top right of your Schoology account.
2. Below your name, you'll see the name of all children associated with your account.
3. To view the activity of a particular child, click the child's name from the dropdown menu.
 - Clicking on the Student name will display their Summary page (see below).
 - When you have multiple children in the same school, clicking on the icon to the right of the student name will allow you to choose which child to view.



Student Activity View

Summary (Left Menu)

The child's Summary area displays the following information for your child's school, courses, and groups:

- Student Activity
- Enrollments
- Recent Grades/Attendance
- Upcoming

Student Activity

The Student Activity area displays the most recent updates, submissions, comments, and grades (if applicable) for a student account. To filter these items, click on the Most Recent toggle to the right of the Student Activity heading.

You can filter the items you see in this feed

Student Activity Enrollments Most Recent ▾

Tina Taylor replied to Myths and Legends. Aug 1 at 12:44 pm
 “ This is another fun Flashcard game to try for ancient tales, myths, and legends!

Jane Smith ▸ English 101: Section 1:
 We have a shortened class on Friday due to the shared assembly, but don't forget to hand in your debate topic preferences before you leave class.

Tina Taylor received 87.5/100 for Order of Operations Aug 1 at 11:21 pm

Tina Taylor received 14/15 for Revolutionary Period Quiz Aug 1 at 11:15 pm

Recent Grades/Attendance

Graded assignments 5
 Graded tests/quizzes 1
 Graded discussions
 Attendance 1

Upcoming

Monday, September 9, 2013

9 Meeting 7:00 pm
 9 First Day of Class

Enrollments

The Enrollments area displays a list of all of the child's courses and groups. You can:

- View course as the student - Clicking on the course name allows you to view the course as your child views the course.
- View group as the student - Clicking on the group name allows you to view the group as your child views the course.
- To return to the Enrollments area of the student, click on Home on the top menu.

Enrollments

Courses Current ▾

	Grade	Attendance
Math II: Section 2		
English 101: Section 1	A- 92.22%	1 1

Groups

Poetry Club

Recent Grades/Attendance

Graded assignments 5
 Graded tests/quizzes 1
 Graded discussions
 Attendance 1

Upcoming

Monday, September 9, 2013

9 Meeting 7:00 pm
 9 First Day of Class

Recent Grades/Attendance

On the right column of the Summary page, the Recent Grades/Attendance area lists graded assignments, tests/quizzes, discussions and Attendance marks for the student. (Note that not all teachers will be using all of these features.) To view the graded items and attendance marks, click on the item you'd like to view.

Recent Grades/Attendance

Assignments

Order of Operations 87.5
 Reading Assignment - "On Virt... 5
 Writing Activity: Narrative Essays 5
 Reading Assignment: "Rip Van ... 4.5
 Reading Assignment: "The Bla... 3

Enrollments

Courses Current ▾

	Grade	Attendance
Math II: Section 2		
English 101: Section 1	A- 92.22%	1 1

Upcoming

On the right column of the Summary page, the Upcoming area displays a list of approaching events and graded items in the child's school, courses, and groups. To view more details about the item, click on the name of the item from the list.

Calendar (Left Menu)

This calendar displays events and items with due dates in the child's school, courses, and groups. Each event is color-coded: Course events are orange, Group events are green, School events are pink, and Personal events are blue. There is a color guide below the calendar for your reference.

To find out more information regarding a particular event, place your cursor over the title. A tip will appear with the event type (assignment, test/quiz, event), the course or group that the event is associated with, and the child's name that is associated with that event. Clicking on the event will display profile information in a popup window.